



Product: 24 Inch Dual Zone Indoor/Outdoor Wine Cooler

Model Number: TWC2401DO

PRODUCT DIMENSIONS

Cooler Width (in.)	24
Depth (Excluding Handles) (in.)	23 13/16"
Depth (Including Handles) (in.)	25 3/8"
Depth (Less Door) (in.)	22 1/16"
Depth With Door Open 90 Degrees (in.)	46 1/16"
Height to Top of Door Hinge (in.)	34 1/4"
Product Depth (in.)	23 13/16"
Product Height (in.)	34 1/4"
Product Width (in.)	23 7/16"

WARRANTY: TWO YEAR LIMITED WARRANTY



FEATURES & BENEFITS

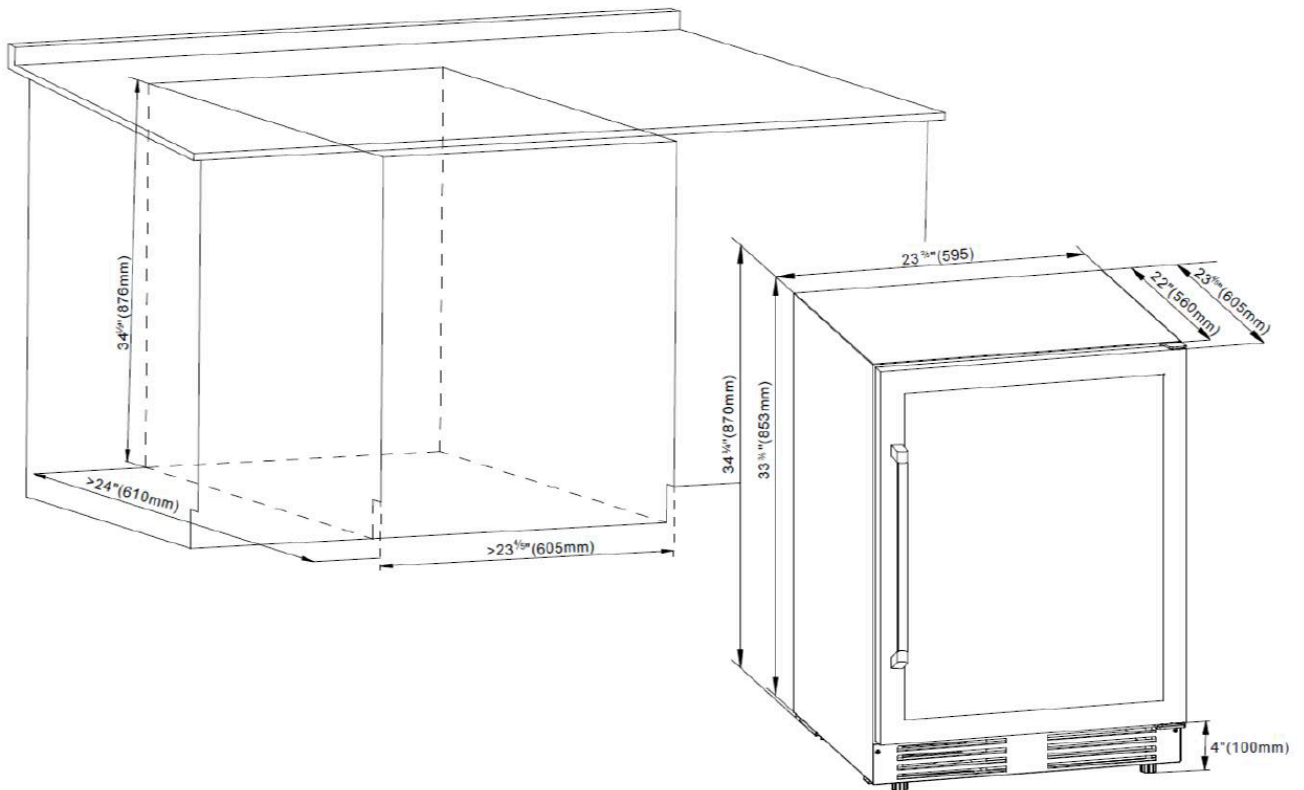
- + **Precise Temperature Control** - Electronic temperature control with LED digital display - set temperature anywhere between 41-65°F and the wine cooler will hold it precisely
- + **Dual Temperature Zones** - Store red, white, and sparkling beverages at the appropriate temperature for proper preservation and maximum taste
- + **Maximum Storage Capacity** - Holds up to 46 bottles for maximum storage
- + **Indoor/Outdoor Use** - 304 stainless steel makes it suitable for indoor and outdoor installation
- + **Full-extension Racks** - Full-extension smooth-glide wine racks allows for easy access to your prized vintage collection - the wood front give the metal racks a sleek, high-end design
- + **Interior Lights** - LED interior light so you can easily see what's inside
- + **UV Protection** - Dual pane glass with low-e protects your wine from harmful ultraviolet rays
- + **Proper Storage** - Shake and water proof storage ensure no vibrations and excess humidity, leaving your wine undisturbed and the flavor of the wine at its peak
- + **Charcoal Filtration System** - An active charcoal filtration system to ensures air purity, cooling efficiency and helps to maintain an odor free cabinet for the storage of your wine.
- + **Door Alarm** - Door alarm notifies you if the door is left ajar for too long
- + **Security lock** - Security lock to keep out unwanted guests
- + **Refrigerant:** R600a is an advanced refrigerant that is more efficient and better for the environment

TECHNICAL DETAILS

Bottle Storage Capacity	46
Color/Finish	Stainless Steel
Voltage (Volts)	120
Minimum Temperature (F)	41
Number of Doors	1 Door
Number of Refrigerator Shelves	6 Shelves
Number of Temperature Zones	Double Zone
Operational Features	LED, Controls, LED Temperature Controls
Product Weight (lb.)	130 lb

TWC2401DO Installation

This unit is designed for both built-in or free-standing installation. If you plan to use this unit in a built-in application, please follow the requirements shown below.



Cabinet Opening Dimensions		
	IN (min)	CM (min)
Width	23 4/5"	60.5 cm
Depth	24"	61.0 cm
Height	34 1/2"	87.6 cm